

Himalaya Bay, Sonora

—a great starting point for a fantastic dive adventure! Each year, The Dive Shop travels to the remote beaches of Mexico for exciting diving expeditions. Imagine unlimited air fills, plenty of beautiful, pristine dive sites, scenic beaches and hills, and a campfire gathering under a star-lit sky where you can tell your fish stories.

The Dive shop provides real flush toilets and a shower for your comfort. We also provide shade canopies and firewood. This is camping in style!

Besides unlimited beach diving, our Zodiac boats depart throughout the day—we visit twenty-seven dive sites. Our boats are operated by trained Divemasters who are more than happy to introduce you to wonderful dive sites. Himalaya Bay is an outstanding destination certainly worth visiting more than once!

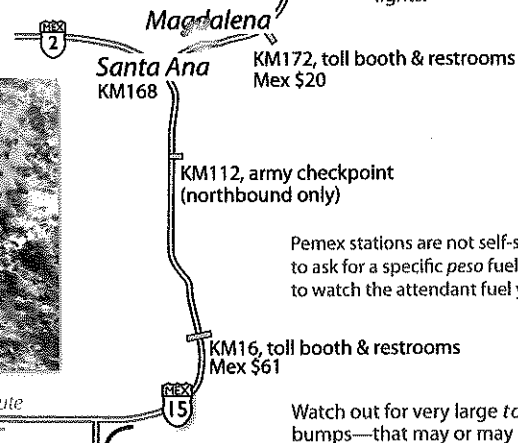
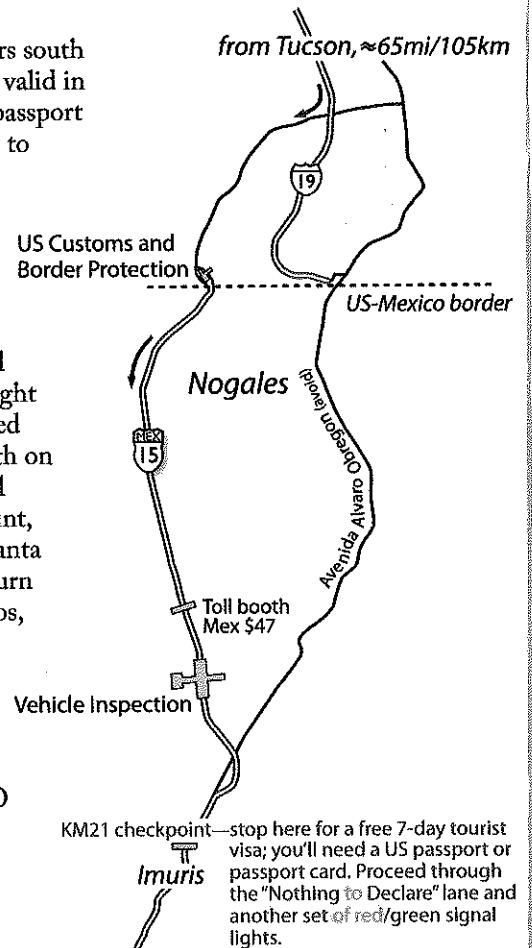
Traveling to Himalaya Bay

- You need Mexico-valid insurance for your vehicle
- You need a US passport or passport card to return
- Stop at the 21km checkpoint for a free 7-day tourist visa
- Most places will accept US dollars—check the rate
- Get pesos at US exchange houses or many Mexican banks
- Gas is plentiful at also-plentiful Pemex stations, use pesos
- ATMs are available but you may be charged fees

Himalaya Bay is located about six hours south of Tucson. You will need car insurance valid in Mexico and a current US passport or passport card. From Tucson head south on I-19 to Nogales and exit at the Mariposa commercial crossing (exit 4). Go west to the border. Once across, go south and you'll come to the Vehicle Inspection Station.

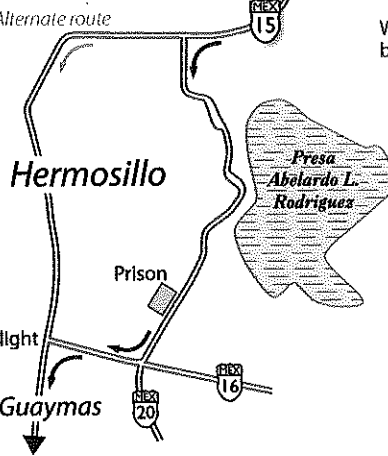
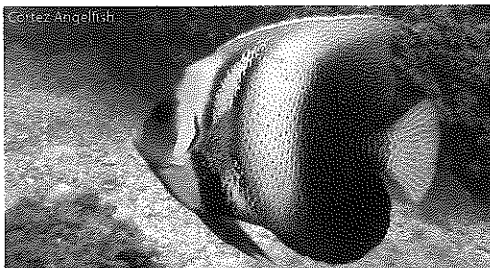
Proceed slowly over serious speed bumps (*topes*) and through some signal lights. If you get a red "REVISION" light and buzzer, pull over and you'll be asked some routine questions. Continue south on Mexico highway 15, stopping for a toll booth and again at the 21km checkpoint, and follow, in turn, signs for Imuris, Santa Ana, Hermosillo, and Guaymas. The turn toward Himalaya Bay is at Los Arrieros, KM171, about 52 miles/84km south of Hermosillo. You'll see a sign for Sonora state highway 24 west to Bahía Kino. If you need

fuel or snacks or ice you'll find a Pemex gas station and an OXXO convenience store. Zero your odometer at the turn and follow map directions continued on the other side of this page.

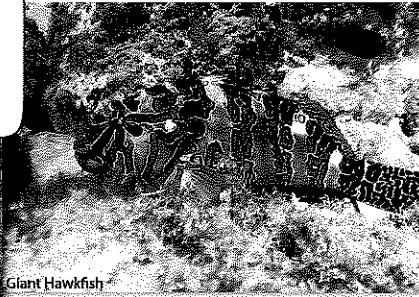
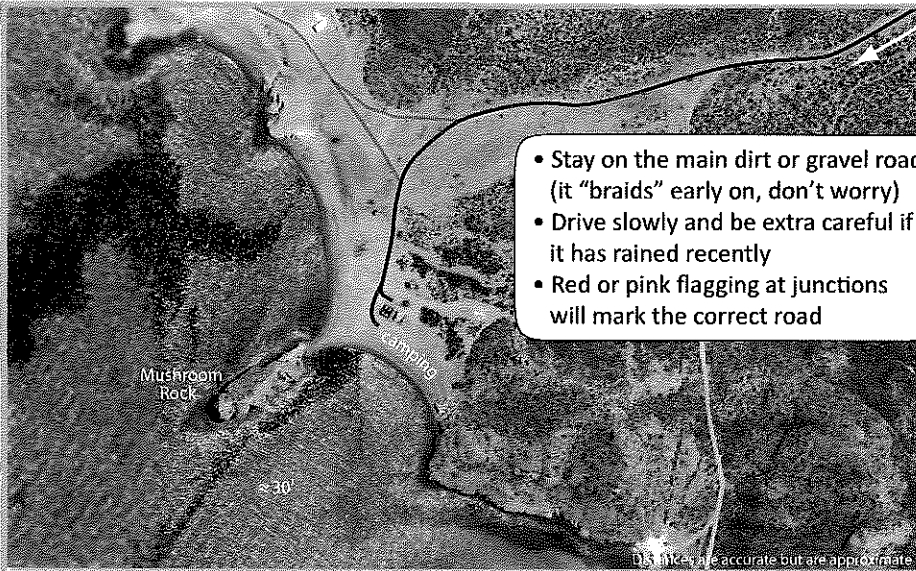


Toll booth fees are between US \$2–\$6. They accept dollars but as for most goods and services it is usually easier and faster to deal in pesos. Know the exchange rate—a calculator is helpful.

The Dive Shop
1702 E Prince Rd
Tucson AZ 85719
520-326-DIVE
azdiveshop.com



Map continued on other side



Crossing the border

- US and Mexican vehicle insurance
- Driver's license
- Current and valid passport or passport card
- DO NOT bring any drugs, firearms, or ammo

Vehicle

- Tuned-up and belts and hoses checked
- Fluids checked and topped-off
- Tires checked, properly aired, and in good condition
- Extra fluids, belts, hoses, fuses
- Spare tire and jack
- Tools

Clothing and miscellaneous

- Swimsuits, shorts, long pants
- Short- and long-sleeve shirts
- Hat, sandals, and sunglasses
- Towels and toiletries
- Sunscreen and mosquito repellent (DEET)
- First aid kit and personal medications
- Cash (dollars and pesos)
- Camera and spare batteries and digital storage cards

11.7m/18.8km
28° 18.867'N, 111° 13.479'W

Turn LEFT onto dirt road

Dive gear

- Fins, booties, mask (plus anti-fog drops), and snorkel
- Exposure protection—wetsuit (3mm), skin, hood, gloves (temps vary)
- Regulator, BCD, and weight belt and weights
- Dive computer or RDP/dive table
- Dive watch
- Dive knife
- Save-a-dive kit
- Surface signal (mirror, whistle, and/or safety sausage)
- Underwater slate and pencil
- Lights with extra batteries and bulbs (primary, back-up, and tank marker)
- Underwater camera and spare batteries, digital storage cards, and O-rings/seals
- Gear bag(s) and gear sorting/lay-out tarp
- Log book and certification card

Zero your odometer here
28° 19.102'N, 111° 2.527'W

20.4m/32.8km
Narrow cattle guard, white posts & gate to left

21.5m/34.6km
Narrow cattle guard, white posts

23.6m/38km
27.2m/43.8km
28° 8.855'N, 111° 18.834'W

22.8m/36.7km
24.5m/39.4km
Stay LEFT, sign "Ensenada Chica 4k"

Camping supplies

- Food and water (enough for cooking, drinking, and rinsing)
- Stove and fuel, cooking and eating implements as needed
- Cooler(s) and ice (frozen bottles of water work well)
- Tent and long stakes and hammer or sandbags and small shovel
- Tarp(s), ropes, and tie-downs
- Mats for sandy feet and gear sorting
- Sleeping pads (cots or air mattresses are good choices)
- Sleeping bag or enough bedding/blankets (it can be chilly at night)
- Matches and/or lighter plus spares
- Flashlights/lanterns and spare batteries
- Knife, bottle and/or can opener
- Chairs, table, and canopy
- Trash bags

Travel and camping etiquette

- You are a visitor, obey Mexican law
- Be courteous—"por favor" (please) and "gracias" (thank you) will go a long way
- Let someone know where you are going and when you expect to return
- US \$s are widely accepted but pesos are usually faster and easier for most things
- Maintain a clean camp and help us keep Himalaya Bay clean and beautiful

Returning to the US

- Current and valid passport or passport card
- Do not bring back illicit or Rx drugs (unless you have an Rx), pork, eggs, fruit, vegetables—check your vehicle carefully for any of these items; see www.cbp.gov/xp/cgov/travel/vacation/kbyg/
- Expect delays
- Be courteous

Himalaya Bay

Miscellaneous

- Weather - www.wunderground.com/global/stations/76255.html
- Fishing - www.conapescasandiego.org/contenido.cfm?cont=MAIN&CFID=307470&CFTOKEN=97104160



Line Path
Length: 15.49 Miles
 Mouse Navigation Clear

Data SIO, NOAA, U.S. Navy, NGA, GEBCO
Image © 2009 DigitalGlobe
© 2009 Google
© 2009 INEGI

©2007 Google™

Pointer: 28°18'50.97" N 111°13'27.17" W elev: 147 ft

Streaming: 100%

Eye alt: 11.86 mi

GPS Cue sheet.

GPS coordinates may vary slightly due to different GPS receivers and actual location of reading.

App. 50 miles South of Hermosillo:

PetroMex station at junction

Head west on Ctra Guaymas-Miguel Alemán	28°19'06.80" N	111°02'32.11" W
Head south on dirt road (app. 11.7 miles from 15)	28°18'52.44" N	111°13'25.53" W
Head east at intersection	28°14'44.19" N	111°14'34.63" W
Head south at turn	28°14'36.10" N	111°13'57.94" W
Continue straight	28°13'04.32" N	111°14'20.07" W
Continue straight	28°12'31.89" N	111°14'27.86" W
Continue straight (slight bend)	28°10'55.38" N	111°14'52.97" W
Continue straight	28°10'03.15" N	111°15'39.97" W
Bear left at fork	28°09'34.21" N	111°16'15.33" W
Turn North (right)	28°08'53.85" N	111°16'35.75" W
Straight at 'T'	28°08'58.42" N	111°18'38.97" W
Himalaya Bay	28°08'53.93" N	111°18'49.48" W

Return to paved road:

Straight at 'T'	28°08'57.82" N	111°18'41.16" W
Bear right at fork	28°09'04.86" N	111°16'47.86" W
Turn North-East (Left)	28°08'53.85" N	111°16'35.75" W
Continue straight	28°10'03.15" N	111°15'39.97" W
Continue straight (slight bend)	28°10'55.38" N	111°14'52.97" W
Continue straight	28°12'09.27" N	111°14'33.90" W
Continue straight	28°12'31.89" N	111°14'27.86" W
Continue straight	28°13'04.32" N	111°14'20.07" W
Bear right (straight) at fork	28°13'12.09" N	111°14'18.00" W
Head west at turn	28°14'36.10" N	111°13'57.94" W
Head north at intersection	28°14'44.19" N	111°14'34.63" W
Head east on paved road to return to 15	28°18'52.44" N	111°13'25.53" W